

Print, Photographic

2004.0005.008

Black and white photograph of the Angle Lake Presbyterian Church in 1936. A group of people are standing on the church steps while another group of people is visible around the corner, standing just outside the foyer. An old model car is parked beside the church steps. The Angle Lake Church was located on South 192nd Street, East of Des Moines Way.



Angle Lake Church

Angela Stalgis- 09/05/2008 : The accession number 2004.0005 appears in the accession line on the back of this photographs browser file. A number of objects and photographs, all from the same donor, are associated with this number. However, this photograph is also identified by a second accession number: 2005.0103. It appears that this second accession number was designated at a later time in an attempt to give individual photographs their own unique identification number; no other objects appear to be related to the 2005.0103 accession number.

As supporting evidence for my theory, look to PH 37. This photograph features the same subject matter as PH 962 and was donated by the same person. The original(?) accession number is scratched out, and a new number (2005.0102) was written above it. Just like 2005.0103, no other objects are associated with accession number 2005.0102.

Title Angle Lake Presbyterian Church

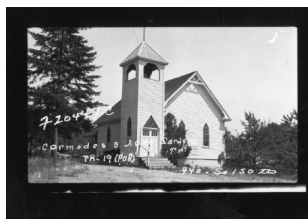
Date 1936 - 0

Storeloc Collections Storage SS8.D.3 Religion & Global Beliefs

Print, Photographic

2009.0006.001

5" x 4" B & W photo of the old Highline Methodist Church at 440 S. 150th. Current location (2009) is at 1st Ave S and S130th.



Old Burien Methodist

Photograph is a survey photo (original may be at King County Archives)

Cormodes 5 Acre Garden TR-19(POR) 720447C

Title Old Highline Methodist Church

Date

Storeloc Collections Storage SS8.D.3 Religion & Global Beliefs
