

Print, Photographic

2005.0125.001

3 B & W photos of King County Deputy Sheriff Unit #166.



Title In the garden at Manhattan (Normandy Park)

Date

Storeloc Collections Storage SS8.D.3 King County - Box 1

Print, Photographic

2009.0005.002

3 x 5 Black & White photo of fire truck (a late 1930's model ?) with a sign on the side " Fireman's Dance/ Spanish Castle Friday April 15th"



Title Fire District #11 truck

Date

Storeloc Collections Storage SS8.D.3 King County - Box 1

Print, Photographic

2009.0005.004

7 3/4 x 9 3/4 B & W photo of the Riverton General Hospital, before new additions were built. Expanse of lawn in the front with trees on either side. Sea Tac area. Originally the Pulmonary Hospital of the City of Seattle.



Title Riverton General Hospital

Date

Storeloc Collections Storage SS8.D.3 King County - Box 1

Print, Photographic

2009.0016.009

This 8 x 10 1/2" aerial color photo of SW King County is sundamaged (coloring is blue) with margins of appropriate color. The left side of the photo is Puget Sound, the right side is Lake Washington showing one of the floating bridges crossing the lake (probably I-90). Interstate 5 runs from top middle to lower left side, the river system shows the horseshoe bends, Sea-Tac International Airport is middle left and Longacres Race Track is middle right with highway 518 at its upper (northern) end.



The photo has been removed from the "frame" that it was in. The frame is in the folder.

Title Aerial View of Southwest King County ca 1989

Date

Storeloc Collections Storage SS8.D.3 King County - Box 1

Print, Photographic

2009.0018.013

Aerial View of University of Washington Campus ca 1960
8 x 10 B&W photo of the University of Washington Campus
from Lake Washington (left) to I-5 at top of photo.
Landmarks: Husky stadium next to airplane strut, Drumheller
Fountain (circle at middle 1/4, Quad to the right of fountain.
Bare patch is former Montlake Garbage dump, University
Village is to the right.



Title Aerial View of University of Washington Campus ca 1960

Date

Storeloc Collections Storage SS8.D.3 King County - Box 1

Print, Photographic

2009.0018.014

U of W , SR 520, Montlake Cut, I-5, ca 1960
8 x 10 B & W photo of SR 520 in the foreground, with the
Montlake Cut and University of Washington Campus in the
middle of the picture. Pathway leading to fountain is quite
visible. The U of W campus was the location for the Alaska
Yukon Pacific Exposition during 1909.



Title U of W , SR 520, Montlake Cut, I-5, ca 1960

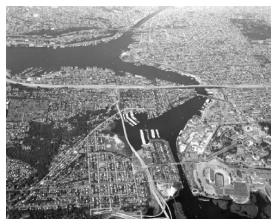
Date

Storeloc Collections Storage SS8.D.3 King County - Box 1

Print, Photographic

2009.0018.015

University of Washington Campus to I-5 ca 1960
8 x 10 B & W photo showing the greater Seattle area from
Lake Washington to Lake Union, bisected by SR 520 west to
east and I-5 south to north. U W campus is middle to lower
right and Woodland Park and Zoo is in the upper right hand
corner. The Lake Washington Ship Canal is in the upper
middle with the "Aurora Bridge"



Title University of Washington Campus to I-5 ca 1960

Date

Storeloc Collections Storage SS8.D.3 King County - Box 1

Print, Photographic

2009.0018.016

Elliott Bay, ca 1960
8 x 10 B & W photo showing Elliott Bay waterfront being
approached by a Washington State ferry, the Alaskan Way
Viaduct, I-5. This is an east - west view.



Title Elliott Bay, ca 1960

Date

Storeloc Collections Storage SS8.D.3 King County - Box 1

Print, Photographic

2009.0018.017

Elliott Bay, ca 1960, from north to south
8 x 10 B&W ca 1960 photo shows the south end of Elliott with tankers, freighters. This is the working docks area. Harbor Island is in the middle of the photo. Alki Point is at the top right of this photo, and West Seattle is the major residential/business area. Brace Point is visible at upper left. There are two photos in this file.



Title Elliott Bay, ca 1960, from north to south

Date

Storeloc Collections Storage SS8.D.3 King County - Box 1

Print, Photographic

2010.0002.046

20 Boulevard Park Library Guild color photos and paper/printed photos



Title Boulevard Park Library Guild

Date

Storeloc Collections Storage SS8.D.3 King County - Box 1

Print, Photographic

2011.0014.015

Downtown Seattle from north- looking at waterfront, R.R. Yds,
Beacon Hill 10x 6.5" photo



Title Downtown Seattle

Date

Storeloc Collections Storage SS8.D.3 King County - Box 1
