

Print, Photographic

1976.0202.001

5 x 7" B & W photo of Old Log Hall located at SW 154th & Ambaum Blvd. View of entrance showing phone booth. Building was built in 1930's by Highline Men's Progressive Club. Some who helped build it were Joe Tennis, JR. "Dad" Wright, Albert Tanksley and Louis Eyler. Used for a community meeting hall and dances.



The Hall was built from scratch, using free labor and cutting logs in the area for lumber. The community collected nickels and dimes.

Ladies went to meetings and learned quilting. The stone chimney was built by Mr. Carter, the mason. Looks like river rocks. Chuck Carter said the shakes came from wood cut on somebody's land on First Avenue.

In the '50's this hall was also used as a co-op preschool.

Currently in use by Alcoholics Anonymous and known as "A New Beginning" as of 2000's

Title Old Log Hall in Burien - Front View

Date

Storeloc Collection, Storage SS8.D.1, Blds & Structures Box 1

Print, Photographic

1987.0031.001a

A retired bricklayer, Clinton G. Stewart, was an apt teacher to Boulevard Park Elementary Fifth Graders at the recent career fair where students had an opportunity to learn of various career possibilities. Ron Fields, working with trowel, wants to be an architect. He presented a blue print of a house he designed himself for Stewart to see. Sonya Vasilieff, another fifth grader, views the operation with interest.



Title Boulevard Park Elementary Career Day, 1972

Date 1972 - 1972

Storeloc Collections Storage SS8.D.1, Blds & Structures Box 1

Print, Photographic

2004.0066.001

8" x 10" B&W glossy of Astro Plaza apartment building in Burien. The Astro Plaza fronts on SW 122nd Pl. about a block from Ambaum Blvd. It has a service station that fronts on Ambaum near it. 1219 SW 126th St., Burien WA



Title Astro Plaza, Burien

Date

Storeloc Collections Storage SS8.D.1, Blds & Structures Box 1

Print, Photographic

2004.0067.023

8 x 10 B & W photo of an unidentified new construction and therefore empty storefront in Burien. A car and a truck are parked in front with mounds of dirt between them. On the corner of 6th Ave SW & 153rd Street



Title Unidentified Stores on SW 153rd in Burien

Date

Storeloc Collections Storage SS8.D.1, Blds & Structures Box 1

Print, Photographic

2004.0079.002

8 1/2 x 11" B & W photo of Burien looking west from the 509/518 intersection c1970-80. For help in dating this picture, telephone number on back of photo has no area code and uses prefix of Ch(erry) 4-1101



Title Aerial photo of Burien

Date

Storeloc Collections Storage SS8.D.1, Blds & Structures Box 1

Print, Photographic

2004.0079.003

8 1/2 x 11" B & W aerial photo of Burien looking Northwest from about 160th to about 130th, Ambaum, 1st Ave S., and a portion of Hwy 509 are clearly visible. 160th is in the lower left corner with the intersection of 4th Ave SW. The x shaped building was a nursing home connected to Highline Hospital, is now (c2000) a private Montessori school. Parklike grounds abutting 160th is Lakeview School. Lake Burien is at far left at margin of photo and Seahurst Park is at upper 1/3 of photo. Highline High School is at bottom right corner.



Title Aerial Photo of Burien - Pre 1970's

Date

Storeloc Collections Storage SS8.D.1, Blds & Structures Box 1

Print, Photographic

2004.0079.004

8 1/2 x 11" Black and white photo of Burien looking south from about 146th to about 160th with Hwy 509 on the left side of the photo. Sylvester Jr. High School is at upper middle of photo. The view is partial for the track. Highline High School Memorial field is on the left at margin. Part of the school building is visible at mid-left. Park-like grounds "Dottie Harper Park" at lower middle are adjacent to King County Public Library, Burien's 4th library home. Locate areas of interest by identifying Ambaum Blvd by its distinctive curve.



Title Aerial Photo of Burien

Date

Storeloc Collections Storage SS8.D.1, Blds & Structures Box 1

Print, Photographic

2004.0079.005

B & W aerial photo of Burien looking north from about 156th St. to about 116th St. Ambaum, 1st Ave. S, and Hwy 509 are the main N/S roads visible. Buildings visible: Highline High School and Memorial Field are bottom right; Kennedy High School upper middle quarter; shopping mall in the center is in 2008-2009 the Town Square. SW 148th is east-west between park & library and the mall and going towards the off and on ramps to 509 and across to Hwy 518. SW 152 is e-w at lower 1/3 of photo. 152 goes across 509 past HHS.



Title Aerial Photo of Burien

Date

Storeloc Collections Storage SS8.D.1, Blds & Structures Box 1

Print, Photographic

2004.0079.006

Three 4 x 6" Color Photos of the 1930's Tennis Building in its current state (2003). St. Elizabeth's Episcopal Church is across 10th Ave. SW. Tin Shop is beside the building.



Title Olde Burien - Tennis Building

Date

Storeloc Collections Storage SS8.D.1, Blds & Structures Box 1

Print, Photographic

2004.0079.008

Three 4 x 6" color photos of a block in Olde Burien on the south side of 152nd. These buildings are between 9th Ave. SW and 10th Ave. SW on 152nd. Red building in middle is 909 restaurant.



Title Olde Burien - block between 9th and 10th SW on 152nd

Date

Storeloc Collections Storage SS8.D.1, Blds & Structures Box 1

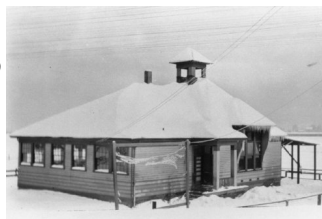
Print, Photographic

2005.0016.002

5" x 3.5" B & W photo of Riverside Elementary School, after a snowfall. Used 1889 to 1920's

Hansen Family collection: Riverside Elementary School, 1889 to present.

(Riverside is the neighborhood along the Duwamish north of the 1st Ave So Bridge)



Title Hansen Family collection: Riverside Elementary School

Date

Storeloc Collections Storage SS8.D.1, Blds & Structures Box 1

Print, Photographic

2005.0016.003

5" x 3.5" B & W photo from Hansen Family collection: Riverside School class, Teacher Miss Kimble.

George Hansen at far right - upper row
Brother to Dorothy Hansen



Title Hansen Family collection: Riverside School class - Miss Kimble teacher

Date

Storeloc Collections Storage SS8.D.1, Blds & Structures Box 1

Print, Photographic

2005.0016.004

5" x 3.5" B & W photo from Hansen Family collection:
Riverside School class - Miss Kilsby, teacher. c.1904

Harvey, right of teacher.



Title Hansen Family collection: Riverside School class - Miss Kilsby, teacher.

Date

Storeloc Collections Storage SS8.D.1, Blds & Structures Box 1

Print, Photographic

2005.0016.010

3.5" x 5" B & W photo of Louis Hansen plowing a field with a horse-drawn plow by the Riverside School. Field is in the foreground; horse and Hansen are in the left third of the picture; tree-lined hills (West Seattle Green Space) with houses are beyond a fence in the background.



Title Hansen Family collection: Louis Hansen plowing field by the Riverside

Date

Storeloc Collections Storage SS8.D.1, Blds & Structures Box 1

Print, Photographic

2005.0107

8 1/2 x 11" B & W photo - closeup of 2 totem poles
Tglintkit or South Alaskan style

Stamp on back reads: "Please Credit Washington State
Department of Commerce and Economic Development,
General Administration Bldg., Olympia, Washington"



Title Two totem poles (WA state)

Date

Storeloc Collections Storage SS8.D.1, Blds & Structures Box 1

Print, Photographic

2005.0110.001

3 1/2 x 5 B & W photo of an old house on Des Moines Way.
Controversy as to whether it is near Sunnydale School or
closer to 172nd. It was one of the buildings first used for the
school children of the Sunnydale area even after the
construction of a rough log cabin specifically as a schoolhouse.
These two buildings handled all the grade levels until the
Sunnydale School opened in 1882 with 11 children attending.
Ella Burton, Mrs. Mike Kelly's sister was their teacher.



Title House on Des Moines Way (Des Moines Memorial Drive) Sunnydale

Date

Storeloc Collections Storage SS8.D.1, Blds & Structures Box 1

Print, Photographic

2009.0003.001

Black & White, 7 1/2 x 5 1/2 picture of the Old Log Hall, Burien, located on Ambaum Blvd. SW and SW 156th. It is a frontal view with a pile of rubble near the doorway. This building has been used consecutively by many different organizations: community meeting hall and dances in the early 1930's, garden club, pre-school co-op, etc. Reference photos #92 and #45 (1976.0202.002)



Title Old Log Hall

Date

Storeloc Collections Storage SS8.D.1, Blds & Structures Box 1

Print, Photographic

2009.0003.002

2 1/4 x 3 1/8" b&w of the side view (chimney view) as it borders on S.W. 154th St. and Ambaum Blvd. in Burien. The stone chimney was built by Mr. Carter, the mason. It looks like "ricer" stones. Reference 1976.0202.001, PH 45.



Title Old Log Hall, Burien

Date

Storeloc Collections Storage SS8.D.1, Blds & Structures Box 1

Print, Photographic

2009.0005.001

8 x 10" B & W photo of children in the small cottage housing the Burien Library from 1943 to 1956. On the back is stamped Highline Times- Photographed by R. M. Parker. Julie McClune's name is on back. She is 3rd from left in the second full row. Her hair has braids on top of her head. The librarian of this particular library was Margrett Lemon.



Title A Class of Children in the 2nd home of Burien Library

Date

Storeloc Collections Storage SS8.D.1, Blds & Structures Box 1

Print, Photographic

2009.0005.003

a) 5x7" B&W photo of men on two firetrucks in front of a building. Written on back: "Fire District No 2 - about 1945"

b) 3x5" B&W photo (same image as a) showing Firetrucks 2 and 3 with firemen in and on the trucks. Behind the trucks is the old post office at 10th SW & SW 152nd

c) Newspaper caption that had been taped to the smaller photo (see text in Notes)



Title Burien Fire Trucks

Date

Storeloc Collections Storage SS8.D.1, Blds & Structures Box 1

Print, Photographic

2009.0005.005

According to attached info card, the tree "on the property of Mabel Clothier, early post-mistress, was located near SW 136th and Ambaum Road. It was used during World War II as an airplane observatory. It is the tree often confused with the lookout tree on the Gunther property at the foot of 152nd in Seahurst. That tree was used by realtor George Gunther, so that prospective customers would have a good view of the area. Both trees at one time had circular staircases built around their trunks."



Title Water Tower on a Tree Top

Date

Storeloc Collections Storage SS8.D.1 Blds & Structures Box 1

Print, Photographic

2009.0005.006

B & W photo 10 x 8". This water tower on the property of Mrs. George Vandevere, on the north side of Lake Burien, was like many others seen in the area early in the century... before Burien formed its own water district. It was George Vandevere who spearheaded a suit to force privately-owned water systems to either provide satisfactory service, or turn the water district over to the county. (Photo courtesy Seattle Times)



Title Water Tower near Lake Burien

Date

Storeloc Collections Storage SS8.D.1, Blds & Structures Box 1

Print, Photographic

2009.0005.017

Two color photographs 3.5" x 5" of beginning of construction of the nearshore area of Seahurst Park (see 2009.0005.018 for other photo - stored in same physical folder).

King County and Burien negotiated for Burien to assume ownership of the former land known as King County Ed Munro Park. It is now Seahurst Park. The property for the park was provided by nature in the mid-1940's when a very serious landslide roared down the hill. King County acquired the park property from the Fox estate. It is a popular and well-used waterfront and swimming park. The Marine Technology lab of the Highline School District is also on the property and a salmon run has been built.



Title Beginning Construction at Seahurst Park

Date

Storeloc Collections Storage SS8.D.1, Blds & Structures Box 1

Print, Photographic

2009.0005.018

3.5 x 5" color photograph. A vertical view of construction of the near-shore environment at Seahurst Park. Same view, different camera position as 2009.0005.017 (photos are stored in same physical folder).



Title Beginning Construction at Seahurst Park

Date

Storeloc Collections Storage SS8.D.1, Blds & Structures Box 1

Print, Photographic

2009.0005.019

3.5" x 5" color photo, view of the near-shore environment at Ed Munro Seahurst Park in 1985.



Title Ed Munro Seahurst Park, 1985

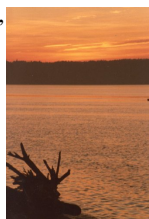
Date

Storeloc Collections Storage SS8.D.1, Blds & Structures Box 1

Print, Photographic

2009.0005.020

3.5" x 5" vertical color photo showing sunset from the near shore at Seahurst Park with a driftwood root in the foreground, left hand side.



Title Sunset from Seahurst Park, 1981

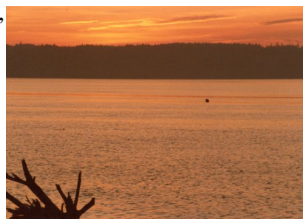
Date

Storeloc Collections Storage SS8.D.1, Blds & Structures Box 1

Print, Photographic

2009.0005.021

3.5" x 5" horizontal color photo showing sunset from the near shore at Seahurst Park with a driftwood root in the foreground, left hand side. Same scene as 2009.0005.020, but horizontal instead of vertical.



Title Sunset at Seahurst Beach, 1981

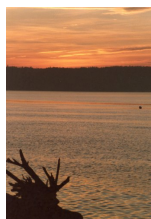
Date

Storeloc Collections Storage SS8.D.1, Blds & Structures Box 1

Print, Photographic

2009.0005.022

Two 3.5" x 5" vertical color photos of sunset at Ed Munro Seahurst Park with slightly different lighting. Photos are very similar to 2009.0005.020.



Title Sunset at Seahurst Park 1981

Date

Storeloc Collections Storage SS8.D.1, Blds & Structures Box 1

Print, Photographic

2009.0005.023

Six 3.5 x 5" color photos of birds (mainly gulls) at Seahurst Park.

- a) California gull at Seahurst Park, posed on park sign reading "NO ALCOHOLIC BEVERAGES" (vertical image)
- b) Gull on driftwood log overlooking the water (horizontal image)
- c) Same gull/log as b, but a vertical image including more driftwood and beach; bird is in top third of photo
- d) Similar to b and c, but bird is centered in photo and looking toward the camera (vertical image)
- e) Gull on log again, but taken from a greater distance, with other birds in flight, on shore, and in the water. Gull is in left third of this horizontal photo.
- f) Similar to e.



Title Shorebirds at Ed Munro Seahurst Park

Date

Storeloc Collections Storage SS8.D.1, Blds & Structures Box 1

Print, Photographic

2009.0005.024

Two 3.5x5" color photos of the sunset over Puget Sound from different vantage points at Seahurst Park.



Title Sunset over Puget Sound from Seahurst Park

Date

Storeloc Collections Storage SS8.D.1, Blds & Structures Box 1

Print, Photographic

2009.0005.025

Four very similar photos of a lone crow in the upland part of Seahurst Park. Crow is perched on something sticking up above the grasses (limb of a fallen tree?). Photos are 3.5 x 5", color; 3 are vertical and one is horizontal.



Title Crow at Seahurst Park

Date

Storeloc Collections Storage SS8.D.1, Blds & Structures Box 1

Print, Photographic

2009.0005.027

- a) 3.5" x 5" color photo of a large bird flying over the landscape of Seahurst Park on the City of Burien's Puget Sound waterfront park. It is a raptor; could be a young eagle (no visible white head or tail feathers) or a large hawk.
- b) Tops of trees in autumn. (Bird on branch of one?)

Seahurst Park is home to nesting eagles. There are other eagle nests on 150th Ave. SW within the boundaries of Eagle's Landing Park as well as on Lake Burien.



Title Raptors at Seahurst Park

Date

Storeloc Collections Storage SS8.D.1, Blds & Structures Box 1

Print, Photographic

2009.0008.005

Five 3.5 x 5" b&w photos of Mary Call of the City of Burien's Planning Office. She is shown doing different tasks for her work on the computers of the city.

- a) Ms. Call putting a floppy disk in the drive (or removing it from the drive) - Dec. 1988
- b) Ms. Call working at a computer. A map is visible on the screen - 11/88
- c) Ms. Call working at a computer - 11/88
- d) Ms. Call standing behind a computer, pointing to a map on the monitor - 11/88
- e) Similar to d, different angle - 11/88



Title Planning Office, City of Burien

Date

Storeloc Collections Storage SS8.D.1, Blds & Structures Box 1

Print, Photographic

2009.0016.002

8 1/2 x 11 Aerial Photo of 152nd St. and the Field House, looking South with SW 152nd upper 1/3 of photo. Compare to 2009.0016.001

6th Ave. SW is on right and 4th Ave. is on left with second home of Burien Library to the left of the fieldhouse.



Title Aerial Photo of Burien - 152nd St. & the Field House, looking South

Date

Storeloc Collections Storage SS8.D.1, Blds & Structures Box 1

Print, Photographic

2009.0016.005

One 6.5 x 7" black and white aerial photo of Lake Burien and surrounding area, and one 8x10" enlargement of same. Landmarks pictured include: 152nd St. SW in the middle of the photo, Ambaum Blvd. at lower 1/3 of photo, St. Francis of Assisi Roman Catholic Church and School at top 1/4. Lake Burien Presbyterian Church is in the upper right 1/3. This picture also shows the fieldhouse in the middle left. c1980.



Title Aerial Photos of Lake Burien area

Date

Storeloc Collections Storage SS8.D.1, Blds & Structures Box 1

Print, Photographic

2009.0016.006

A 3 x 2" B & W photo c 1930 of the Burien office of Puget Sound Power & Light bldg (on corner). A Puget Power truck and cars parked in front. The location appears to be 9th Ave SW and 152nd.



Title Puget Sound Power & Light - Burien

Date

Storeloc Collections Storage SS8.D.1, Blds & Structures Box 1

Print, Photographic

2009.0016.011

8 x 10 B&W photo of Burien, ca 1960. This view is looking from west to east and appears to have been taken after a snowfall. This is before 509 was started. Landmarks: St. Elizabeth's Episcopal Church in the lower right hand corner, Highline High School and Memorial Stadium in the upper right half, fieldhouse and main business district in the upper left half and Ambaum Blvd. in the lower 1/3 of photo. Three prints, same image.



Title Aerial view of Burien, taken from west, looking east - pre SR509

Date

Storeloc Collections Storage SS8.D.1, Blds & Structures Box 1

Print, Photographic

2009.0016.012

8 x 10" B&W photo showing the residential area between Ambaum Blvd and 21st SW, looking west. 152nd St. runs from top to bottom in the center of the photo. The neighborhood of Olde Burien is at the lower center, left of 152nd SW. Landmarks: Masonic Hall and St. Elizabeth's Episcopal Church across 152nd from each other (lower center, just above Olde Burien); St. Francis Roman Catholic Church at the west end of Lake Burien (top center). ca 1960



Title Burien between Ambaum Blvd. SW and 21st SW

Date

Storeloc Collections Storage SS8.D.1, Blds & Structures Box 1

Print, Photographic

2009.0016.014

8 x 10" B & W aerial photo shows Gregory Heights and the south side of Three Tree Point ca 1960. At the top of the photo, right hand side is Normandy Park.



Title Southside of Three Tree Point, ca 1960

Date

Storeloc Collections Storage SS8.D.1, Blds & Structures Box 1

Print, Photographic

2009.0016.021

This 3.5 x 5" color photo shows the Ruth Dykeman Center ca 1970, and St. Elizabeth's Episcopal Church. The Ruth Dykeman Center was previously known as The Ruth Center for Girls. The girls at Ruth were wards of the Juvenile Court who exceeded the 16-year old age limit of the Girls' Parental School (orphanage) or were 'misfits in the public schools' or were pregnant. It was a facility for adolescent girls who could not remain in their own home or utilize foster care facilities, and who did not demand the protection of a physically secured institution or correctional school. Instruction was offered in Junior - Senior High School subjects. The ages actually ranged from 10-16. The buildings are situated at the east end of Lake Burien and the cottages to the west of the original structure were added in the 1960's when the name was changed. 152nd SW runs east-west. This photo was taken after the Burien Fieldhouse was moved onto the grounds. It stands just to the east of the main building, in front of the barn.



Title Aerial of Ruth Dykeman Center & St. Elizabeth's Episcopal Church

Date

Storeloc Collections Storage SS8.D.1, Blds & Structures Box 1

Print, Photographic

2009.0018.006

8" x 6" B&W photo mounted on black tagboard of the Keely Institute, 1902 Seattle. Three men and two women are gathered in the yard near one of the entrances (right), and a woman is leaning over the railing of another entrance (left). A separate piece of paper states: "Kelly Institute (Gold Cure) in the old Stone residence on Kilburne Street before Stone Way was laid out. The manager, A.C. Clark, the Japanese cook are some of the figures on the lawn." - Cure for Alchol Addiction



On the back of the separate piece of paper is information concerning driver awards for school bus drivers who have not had any accidents. It is interesting reading, but has nothing to do with the Kelly Institute.

The Keeley Institute, known for its Keeley Cure or Gold Cure, was a commercial medical operation that offered treatment to alcoholics from 1879 to 1965. Though at one time there were more than 200 branches in the United States and Europe, the original institute was founded by Leslie Keeley in Dwight, Illinois, United States. The Keeley Institute's location in Dwight, Illinois had a major influence on the development of Dwight as a village, though only a few indications of its significance remain in the village.

After Keeley's death the institute began a slow decline but remained in operation under John R. Oughton, and, later, his son. The Institute offered the internationally known Keeley Cure, a cure which drew sharp criticism from those in the medical profession. The cure was wildly popular in the United States.

Date

Storeloc Collections Storage SS8.D.1 Blds & Structures Box 1

Print, Photographic

2009.0018.008

8 1/2" x 11" black & white photo of Alexander and Adelaide Hall, Seattle Pacific College (University) building with 2 turrets on its roof.



Title Alexander and Adelaide Hall, Seattle Pacific Campus

Date

Storeloc Collections Storage SS8.D.1 Blds & Structures Box 1

Print, Photographic

2009.0018.009

8 1/2 x 11" B&W photo of a 3 story building with a bell tower above the entrance on the Seattle University campus. The tower is topped with a cross. The back has a sticker with words "Artcraft Copper" and a date stamp of April 16, 1962. Back is also stamped by Roger Dudley, Commercial Photographer, with a phone number and address in Seattle.



Title Administration Building, Seattle University Campus

Date

Storeloc Collections Storage SS8.D.1 Blds & Structures Box 1

Print, Photographic

2009.0018.010

8 1/2 x 11" B & W photo of the Univ of Washington campus showing a "quad" scene. Back of photo is stamped "Photograph by James O. Sneddon, Office of News Services, University of Washington, Seattle" with S-8378-A handwritten below in pencil.



Title University of Washington Campus

Date

Storeloc Collections Storage SS8.D.1 Blds & Structures Box 1

Print, Photographic

2009.0018.011

6 x 8 B & W photo of the Suzzallo Library at the Univ. of Washington. Drumheller Fountain on the campus and Mt. Rainier are both visible in the background. Back of photo labeled "M-9537. Photograph by John A. Moore, Office of News Services, University of Washington, Seattle"



Title Suzzallo Library at UW

Date

Storeloc Collections Storage SS8.D.1 Blds & Structures Box 1

Print, Photographic

2009.0021.007

8 x 10 B & W photo of early Three Tree Point facing North. A canoe is pulled up on the beach.

Photo is a reproduction, and has a line from top to bottom on the left and the right where different photos appear to have been spliced together to make a larger image.



Title Early Three Tree Point - Facing North

Date

Storeloc Collections Storage SS8.D.1 Blds & Structures Box 1

Print, Photographic

2009.0021.008

Two 8 x 10" b&w photos (same image, reproductions) of the steamer dock at Three Tree Point in the early days of the area. A man and a woman are in a canoe going under the dock, three people are walking on the dock, and a canoe is hauled up on the beach. Four houses are visible on the hill in the background.



Title Early Three Tree Point - Dock for the steamer

Date

Storeloc Collections Storage SS8.D.1 Blds & Structures Box 1

Print, Photographic

2009.0021.012

3.5 x 2.5" B&W of two women barbequing chickens in a stone fireplace at Three Tree Point. "Rustlewood" is written in small stones above the hearth. The writing on the back says: "Barbequing chickens at Three Tree Pt. W.H. Hyatt - 1921 - Friends who were out one week-end. Mr. Glenn W. Tritle."



Title Barbequing Chickens at Three Tree Point

Date

Storeloc Collections Storage SS8.D.1 Blds & Structures Box 1

Print, Photographic

2009.0021.013

Two 3 1/2 x 5" vertical photos of residences at South Beach, 3 Tree Point. Captions on back of photos and enclosed slip of paper note that Ethel and William Hedberg owned one of the last undeveloped lots on the beach of Three Tree Point [South Beach] in the 1950s. South Beach is also known as Sunkist Beach. This lot is on the south side of the Custer Home. Photos are c1950.



Title South Beach - Three Tree Point, c1950

Date

Storeloc Collections Storage SS8.D.1 Blds & Structures Box 1

Print, Photographic

2009.0021.014

Boating at Three Tree Point (b&w image of the shoreline c1910)



Title Early Three Tree Point - boating

Date

Storeloc Collections Storage SS8.D.1 Blds & Structures Box 1

Print, Photographic

2009.0021.015

Early Three Tree Point - arriving by steamer to enjoy a day at the beach. 4x6 b&w photo (reproduction) of a large boat docked at a pier, with a number of people who appear to be headed to shore.



Title Early Three Tree Point - arriving by steamer

Date

Storeloc Collections Storage SS8.D.1 Blds & Structures Box 1

Print, Photographic

2009.0021.016

Early Three Tree Point - view of the interior of one of the houses at Three Tree Point. 4x6 b&w photo (reproduction) of a room, with a small table and chair in the foreground, a fireplace ahead to the right, and antlers on the wall above a cabinet on the left, among other furnishings.



Title Early Three Tree Point - interior of one of the houses

Date

Storeloc Collections Storage SS8.D.1 Blds & Structures Box 1

Print, Photographic

2009.0021.017

4x6 b&w photo (reproduction) of the steamer "Three Tree Point" on the water, tree-lined shore in the background. Note: According to the 3TP book this was a retouched photo of the Harrington. No ship was actually named the "Three Tree Point"



Title Early Three Tree Point - steamer "Three Tree Point" (actually the

Date

Storeloc Collections Storage SS8.D.1 Blds & Structures Box 1

Print, Photographic

2009.0021.018

4x6 b&w photo (reproduction) of one of the early homes on the Point. The house is built into a hill, with trees all around and a deck facing what is presumably a view of the water (left). A woman in a white blouse and dark skirt (bottom left) climbs a flight of stairs to the house. A man lounges in a chair next to the house (right), smoking a cigar.



Title Early Three Tree Point - early home

Date

Storeloc Collections Storage SS8.D.1 Blds & Structures Box 1

Print, Photographic

2009.0021.019

4x6 b&w photo (reproduction) of beach cabins that were put together easily. The cabins are perched on a hill among trees, with stairs leading up to them.



Title Early Three Tree Point - beach cabins

Date

Storeloc Collections Storage SS8.D.1 Blds & Structures Box 1

Print, Photographic

2009.0021.020

4x6 b&w photo (reproduction) of the Pavilion built on the level part of the Point. The Pavilion is l-r center in the photo, extending from trees on the left. A US flag flies above it.



Title Early Three Tree Point - Pavilion

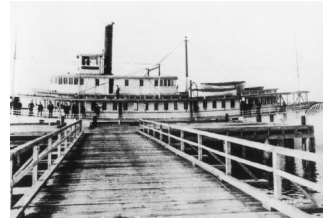
Date

Storeloc Collections Storage SS8.D.1 Blds & Structures Box 1

Print, Photographic

2009.0021.021

4x6 b&w photo (reproduction) of a sternwheeler at the dock.
Label printed in white at bottom of picture: "Scene at Three
Tree Point Park"



Title Early Three Tree Point - Sternwheeler at the dock

Date

Storeloc Collections Storage SS8.D.1 Blds & Structures Box 1

Print, Photographic

2009.0021.022

3.5" x 6" sepia toned photo of the W. H. Hyatt camp at Three
Tree Point (c1915). The B. C. Dinius pergola is at right.

A typewritten statement accompanying the photo says, "Three
Tree Point as it looked in 1915 -- the beginning of its
popularity as a summer hide-away. At that time many campers
still came by boat. Homes of early residents belonged to W.
H. Hyatt and Glen W. Tritle, who later established Tritle
Laboratory in Burien. The B. C. Dinius pergola (at right),
when completed, was featured in Sunset Magazine."



Title 3 Tree Point - abt. 1915

Date

Storeloc Collections Storage SS8.D.1 Blds & Structures Box 1

Print, Photographic

2009.0021.024

8 x 10" B & W photo of Three Tree Point from top of Gregory Heights showing S.W. 172nd running along the shoreline, and the density of housing. Photo is probably c1950 - 1970. The extent of the tidelands is also visible and small boats are moored beyond the tideflats reach at low tide.



Title Aerial Photo of Three Tree Point

Date

Storeloc Collections Storage SS8.D.1 Blds & Structures Box 1

Print, Photographic

2009.0021.027

Two reproductions of a photo of the south side of Three Tree Point (5x7", b&w). The picture highlights a cormorant sitting on a buoy with its wings outstretched to dry. Even in rainy weather, cormorants will spread their wings to allow the feathers to dry. Cormorants do not have oil in the feather shafts so they can't preen.



Title South side of Three Tree Point, Cormorant sitting on buoy

Date

Storeloc Collections Storage SS8.D.1 Blds & Structures Box 1

Print, Photographic

2009.0034.015

This oversized B&W photo shows the area before the freeways were built. SW 152 is in the middle of the picture. Highline Highschool is on the right at the upper 1/4 with Memorial Field behind it. The bare ground adjacent to the highschool is getting readied for practice fields and Moshier Field and arts complex. The community Fieldhouse is in the middle of the picture to the left of 152nd and a softball field behind it. Ground is being broken for new development. St. Elizabeth Episcopal Church is at the bottom right. The runway at Sea-Tac Airport is at the very top of the photo.



Title Aerial photo of Burien - ca1950

Date

Storeloc Collections Storage SS8.D.1 Blds & Structures Box 1

Print, Photographic

2011.0014.014

Downtown Seattle probable circa 1940's 2 1/2 x 3 1/2" b&w photo. Aerial looking north, northeast. YMCA is in the foreground, Olympic Hotel is in the middle, Lake Union, Queen Anne and Wallingford in the background



Title Aerial of Downtown Seattle (ca. 1940s)

Date

Storeloc Collections Storage SS8.D.1 Blds & Structures Box 1

Postcard, Picture

2013.0025.001

Photo Post Card of the Office for Gunther's View Property Lake Burien, WA "Scene at Gunther's Buena Vista Forth Acre Tracts Terminus of Lake Burien Electric RY" Seattle. 21st SW and SW 152nd Street (roughly) in the Seahurst area of Burien. Photo also shows the large sign for the business. 5 1/2 x 3 1/2" Sepia tone



Title Photo Post Card of the Office Gunther's View Property Lake Burien, WA

Date

Storeloc Collections Storage SS8.D.1 Blds & Structures Box 1

Print, Photographic

2016.0018.002

10 x 8" black and white photo of Three Tree Point. Aerial photo looking to the northeast of the point and north and south beach during the replacement of the seawall at the point. Photo credit: Seattle P-I photo from the collection held at the MOHAI



Title Three Tree Point photo

Date

Storeloc Collections Storage SS8.D.1 Blds & Structures Box 1

Print, Photographic

2016.0018.003

10 x 8" black and white photo of Three Tree Point north beach.
A salmon troller the "Sea Lion" aground on the beach.

Seattle PI photo from the collection held at MOHAI



Title The salmon troller the "Sea Lion" aground at Three Tree Point

Date

Storeloc Collection Storage SS8.D.1 Blds & Structures Box 1

Print, Photographic

2017.0031.008

Ten 8x12" color photos of the building and parking lot at the corner of 152nd St and Ambaum Blvd SW. Signage says Pacific Fabrics, but there are For Lease signs in the windows. Some photos appear to be duplicates, but may just be nearly identical photos taken in the same shoot. Metadata printed on back of photos says 03JUN98.



- 1a&b: Photo of lot and building taken from the southeast.
- 2a&b: Photo of building taken from the northwest. Includes the Danish Bakery and the antique store that share the block.
- 3a&b: Photo of building taken from the north
- 4a&b: Photo of building taken from the east
- 5a&b: Photo of building taken from the east

Title 819 SW 152nd - Prop for HHS New Digs

Date

Storeloc Collections Storage SS8.D.1 Blds & Structures Box 1

Print, Photographic

2017.0031.009

6x8" b&w photo mounted on 6.75"x8.5" cardboard. Photo includes wetland in the foreground, 5 workers center-right, a building on the pier center-left, the lake, and tree-lined hills in the background. Photo is not well centered on the cardboard, and right edge is slightly damaged.



Title Unidentified Pier & Wharf, Lake Washington East Side North of Renton

Date

Storeloc Collections Storage SS8.D.1 Blds & Structures Box 1
